



## Adorable Ewe – Part 2

Supported with Video Lessons at [knitpurlhunter.com](http://knitpurlhunter.com)



### Abbreviations...

**B, bobble** (Bobble, Japanese-style) – (k1, yo, k1) into next stitch, turn, p3, turn, slip 2 sts together knit wise (as if working a k2tog), k1, pass 2 slipped stitches together over knit stitch and off the needle. **See *Bobble – Japanese Version Video***

**k2tog** – knit two together. **See *K2tog Video***

**M1L** (Make One Left) – With left needle tip, lift strand between needles from **front to back**. Knit the lifted strand through the **back**. **See *Make One Video***

**M1R** (Make One Right) – With left needle tip, lift strand between needles from **back to front**. Knit the lifted strand through the **front**. **See *Make One Video***

**RS** – right side.

**WS** – wrong side.

**yo** – yarn over. **See *Yarn Over Video***

### Instructions...

#### Back

With **smaller** needles and Main Color, cast on 38 stitches using Long Tail method, leaving a 24" tail for seaming. **See *Long Tail Cast On video***

#### Rib

Work 4 rows in rib pattern as follows:

Row 1. (WS) \*P2, k2; repeat from \* to last 2 sts, p2.

Row 2. (RS) \*K2, p2; repeat from \* to last 2 sts, k2.

Row 3. Same as Row 1.

Row 4. Same as Row 2.

## Set Up

Change to **larger** needles and with WS facing, purl one row.

Increase Row: With RS facing, k2, M1L, knit to last 2 sts, M1R, k2. (40 sts)

Beginning with a purl row, work 7 additional rows in stockinette, ending after a purl row.

## Sheep Motif

When working from the chart, odd numbered rows are knit rows and read from right to left; even numbered rows are purl rows and read from left to right.

Use separate balls of yarn for each color, interlocking the yarns on WS at each color change to avoid holes. **See *Intarsia* video**

With RS facing, place marker after the 7<sup>th</sup> stitch and after the 33<sup>rd</sup> stitch on the left needle.

Beginning with chart's **Row 5**, work chart (p. 3) over the 26 sts between the markers.

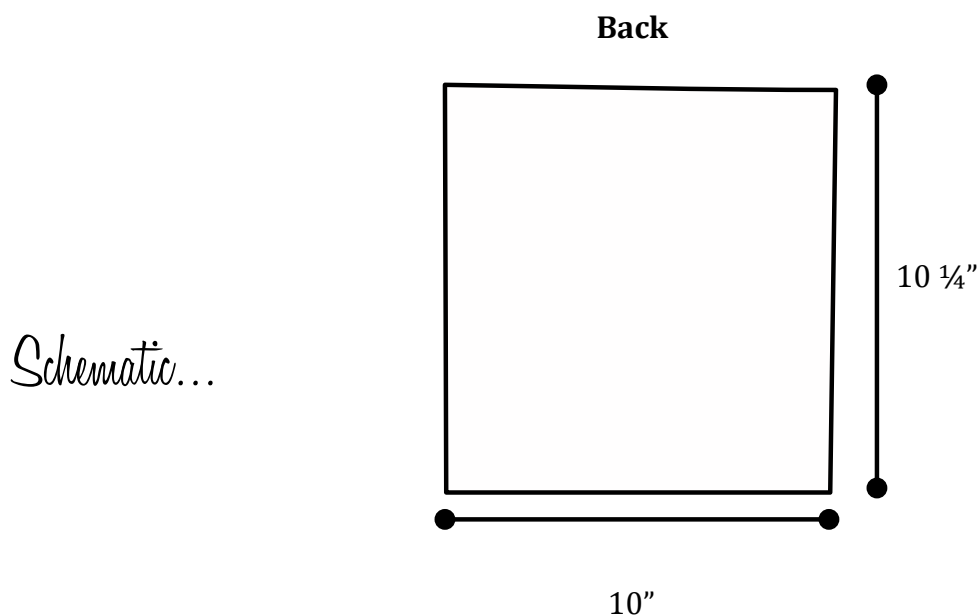
The sheep's black head may be worked in intarsia at this point or added later using a duplicate stitch. The black legs and tail will be worked in duplicate stitch at completion of the back. Any duplicate stitches are first knit in Main Color, with black added later.

**See *Duplicate Stitch* video**

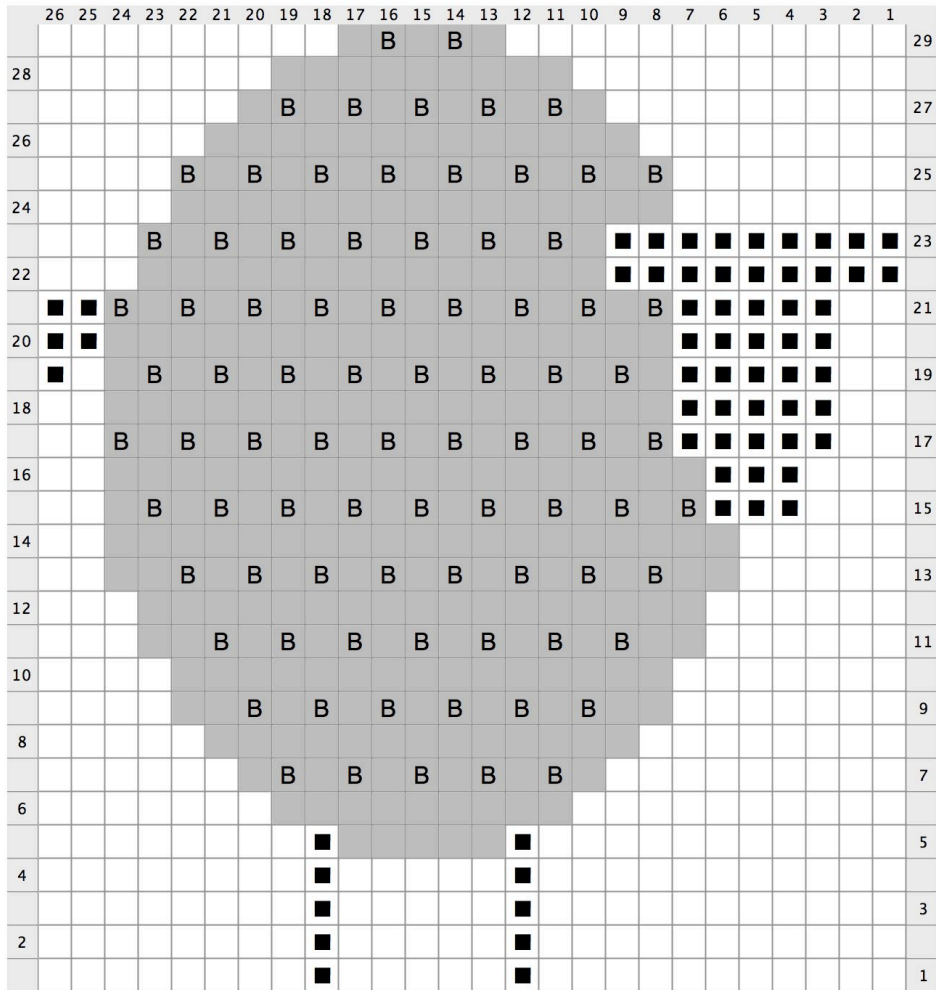
After completing Sheep Chart, continue in established stockinette stitch until Back measures 10  $\frac{1}{4}$ " from cast on edge, ending after a purl row.

Cut yarn leaving an 18" tail for seaming later. Place stitches on a holder. Weave in ends.

©2017 Michelle Hunter



## Sheep Chart



**Legend:**

- knit**  
RS: Using main color, knit  
WS: Using main color, purl

---

- Black**  
RS: Using black, knit or duplicate stitch  
WS: Using black, purl (or duplicate stitch on right side)

---

- Sheep Color**  
RS: Knit  
WS: Purl

---

- Bobble**  
RS: With sheep color, (k1, yo, k1) in one st, turn, p3, turn, sl 2 sts tog knit wise (as if working a k2tog), k1, pass 2 sl sts tog over k st and off needle