



## Behind The Scenes Part One



### Materials...

- OH! By HiKoo, 100% baby alpaca, 100g / 191 yds, 2 skeins
- US#10(6mm) needle, straight or 24" circular
- 4 round buttons, 5/8 - 1" in size
- Cable needle

### Gauge...

18 stitches = 4" in stockinette, unblocked

### Size...

Prior to blocking - 45" long, 7" wide

After blocking - 47" long, 8 1/2" wide

### Abbreviations...

**Note:** Watch *Cables* video for cabling basics.

**BKP** (Back, Knit, Purl) – slip 2 stitches to cable needle and hold in back, knit 2 from left needle, purl 2 from cable needle.

**cn** – cable needle.

**FPK** (Front, Purl, Knit) – slip 2 stitches to cable needle and hold in front, purl 2 from left needle, knit 2 from cable needle.

**sl** – slip. See *Slip Stitch Video*

**wyif** - with yarn in front.

## Instructions...

Cast on 46 stitches using Long Tail Cast On. **See *Long Tail Cast On Video***

### Set Up

Row 1. Knit to last 2 sts, sl 2 wyif.

Rows 2 – 4. Same as Row 1.

### Section A

Work Rows 1 – 22 **once**. (See Chart A, p. 3) Upon completion of Section A, weight remaining in 1<sup>st</sup> skein = 83g.

Row 1. (RS) K2, \*p2, k2, p4, k2; repeat from \* to last 4 sts, p2, sl 2 wyif.

Row 2. (WS) K2, \*k2, p2, k4, p2; repeat from \* to last 4 sts, k2, sl 2 wyif.

Row 3. Same as Row 1.

Row 4. Same as Row 2.

Row 5. Same as Row 1.

Row 6. Same as Row 2.

Row 7. Same as Row 1.

Row 8. Same as Row 2.

Row 9. Same as Row 1.

Row 10. Same as Row 2.

Row 11. K2, p2, \*FPK, BKP, p2; repeat from \* to last 2 sts, sl 2 wyif.

Row 12. K7, p2, \*k8, p2; repeat from \* to last 7 sts, k5, sl 2 wyif.

Row 13. K2, p5, k2 \*p8, k2; repeat from \* to last 7 st, p5, sl 2 wyif.

Row 14. Same as Row 12.

Row 15. Same as Row 13.

Row 16. Same as Row 12.

Row 17. Same as Row 13.

Row 18. Same as Row 12.

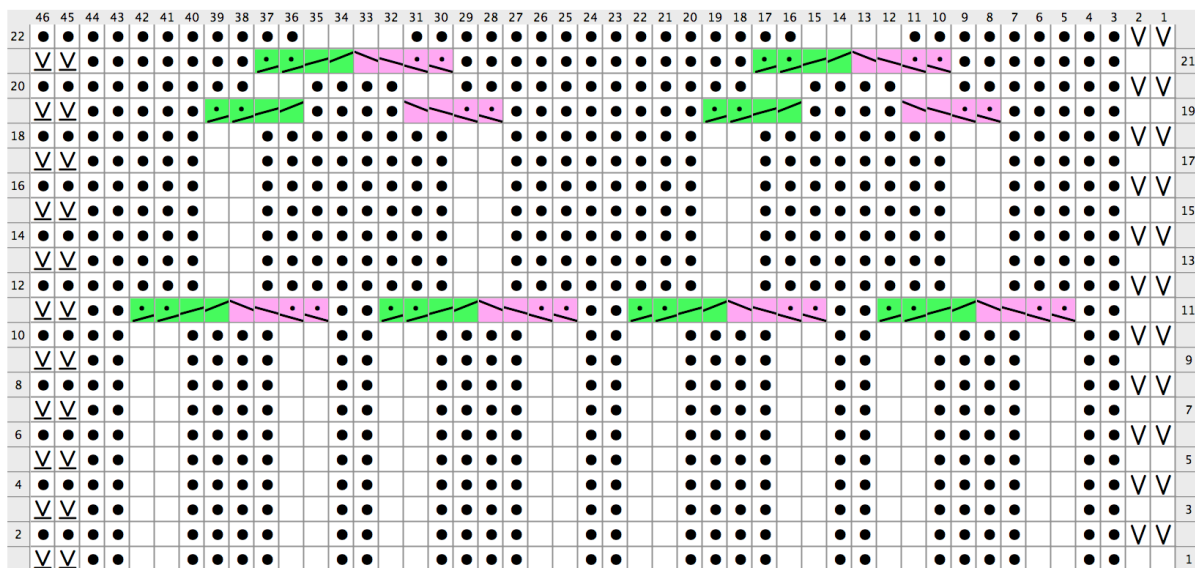
Row 19. K2, p5, FPK, p4, BKP, p8, FPK, p4, BKP, p5, sl 2 wyif.

Row 20. K9, p2, k4, p2, k12, p2, k4, p2, k7, sl 2 wyif.

Row 21. K2, p7, FPK, BKP, p12, FPK, BKP, p7, sl 2 wyif.


Row 22. K11, p4, k16, p4, k9, sl 2 wyif.

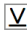
**Chart A**





**Legend:**


 **knit**  
RS: knit stitch  
WS: purl stitch

 **purl**  
RS: purl stitch  
WS: knit stitch

 **Slip wyif on RS**  
RS: Slip with yarn in front on RS

 **Slip wyif on WS**  
RS: Sl with yarn in front on WS

 **FPK**  
RS: (Front, Purl, Knit) sl 2 to cn and hold in front, p2 from left needle, k2 from cn

 **BKP**  
RS: (Back, Knit, Purl) Sl 2 to cn and hold in back, k2 from left needle, p2 from cn

Created in KnitVisualizer ([www.knitfoundry.com](http://www.knitfoundry.com))

©2017 Michelle Hunter