



Cable Channel – Part Two

Supported with video lessons at knitpurlhunter.com



Abbreviations

C1BK2 – slip next stitch onto cable needle and hold in **back** of work, knit next 2 stitches from left hand needle, then k1 from cable needle.

C1BK2P – slip next stitch onto cable needle and hold to **back** of work, k2, p1 from cable needle.

C2FK1 – slip next 2 stitches onto cable needle and hold to **front** of work, knit next stitch from left hand needle, k2 from cable needle.

C2FPK2 – slip next 2 stitches onto cable needle and hold to **front** of work, p1, k2 from cable needle.

C4B – slip next 2 stitches onto cable needle and hold in **back** of work, knit next 2 stitches from left hand needle, then knit 2 stitches from cable needle. **See Cables Video**

C4F – slip next 2 stitches onto cable needle and hold in **front** of work, knit next 2 stitches from left hand needle, then knit 2 stitches from cable needle. **See Cables Video**

cn – cable needle.

LT (Left Twist) - slip as if to knit, slip as if to knit, return both slipped stitches to left needle. Knit second stitch through the back loop, then knit both stitches together through the back loop. **See Left Twist Updated Video**

RT (Right twist) – knit two stitches together and without taking stitches off left hand needle, reknit the first stitch and remove both stitches from left hand needle. **See Right Twist Video**

Instructions

Section B – Pillow Front

Cable Channel – mult. of 26 + 23, 36 rows (See Chart B, p.4)

Row 1. (RS) K7, p2, RT, p1, *LT, p2, k4, p1, C1BK2, k1, C2FK1, p1, k4, p2, RT, p1; repeat from * to last 11 sts, LT, p2, k7.

Row 2. (WS) P7, k2, p2, *k1, p2, k2, p4, k1, p2, k3, p2, k1, p4, k2, p2; repeat from * to last 12 sts, k1, p2, k2, p7.

Row 3. K7, p2, RT, p1, *LT, p2, k4, C1BK2, k3, C2FK1, k4, p2, RT, p1; repeat from * to last 11 sts, LT, p2, k7.

Row 4. P7, k2, p2, *k1, p2, k2, p6, k5, p6, k2, p2; repeat from * to last 12 sts, k1, p2, k2, p7.

Row 5. K7, p2, RT, p1, *LT, p2, k3, C1BK2, k5, C2FK1, k3, p2, RT, p1; repeat from * to last 11 sts, LT, p2, k7.

Row 6. P7, k2, p2, *k1, p2, k2, p5, k7, p5, k2, p2; repeat from * to last 12 sts, k1, p2, k2, p7.

Row 7. K7, p2, RT, p1, *LT, p2, k2, C1BK2, k7, C2FK1, k2, p2, RT, p1; repeat from * to last 11 sts, LT, p2, k7.

Row 8. P7, k2, p2, *k1, p2, k2, p4, k9, p4, k2, p2; repeat from to last 12 sts, k1, p2, k2, p7.

Row 9. K7, p2, RT, p1, *LT, p2, C4F, k9, C4B, p2, RT, p1; repeat from * to last 11 sts, LT, p2, k7.

Row 10. P7, k2, p2, *k1, p2, k2, p4, k9, p4, k2, p2; repeat from * to last 12 sts, k1, p2, k2, p7.

Row 11. K7, p2, RT, p1, *LT, p2, k2, C2FK1, k7, C1BK2, k2, p2, RT, p1; repeat from * to last 11 sts, LT, p2, k7.

Row 12. P7, k2, p2, *k1, p2, k2, p5, k7, p5, k2, p2; repeat from * to last 12 sts, k1, p2, k2, p7.

Row 13. K7, p2, RT, p1, *LT, p2, k3, C2FK1, k5, C1BK2, k3, p2, RT, p1; repeat from * to last 11 sts, LT, p2, k7.

Row 14. P7, k2, p2, *k1, p2, k2, p6, k5, p6, k2, p2; repeat from * to last 12 sts, k1, p2, k2, p7.

Row 15. K7, p2, RT, p1, *LT, p2, k4, C2FPK2, k3, C1BK2P, k4, p2, RT, p1; repeat from * to last 11 sts, LT, p2, k7.

Row 16. P7, k2, p2, *k1, p2, k2, p4, k1, p2, k3, p2, k1, p4, k2, p2; repeat from * to last 12 sts, k1, p2, k2, p7.

Row 17. K7, p2, RT, p1, *LT, p2, k4, p1, C2FPK2, k1, C1BK2P, p1, k4, p2, RT, p1; repeat from * to last 11 sts, LT, P2, k7.

Row 18. P7, k2, p2, *k1, p2, k2, p4, k2, p2, k1, p2, k2, p4, k2, p2; repeat from * to last 12 sts, k1, p2, k2, p7.

Row 19. K7, p1, C1BK2, k1, *C2FK1, p1, k4, p2, RT, p1, LT, p2, k4, p1, C1BK2, k1; repeat from * to last 11 sts, C2FK1, p1, k7.

Row 20. P7, k1, p2, k1, *k2, p2, k1, p4, k2, p2, k1, p2, k2, p4, k1, p2, k1; repeat from * to last 12 sts, k2, p2, k1, p7.

Row 21. K7, C1BK2, k2, *k1, C2FK1, k4, p2, RT, p1, LT, p2, k4, C1BK2, k2; repeat from * to last 11 sts, k1, C2FK1, k7.

Row 22. P9, k2, *k3, p6, k2, p2, k1, p2, k2, p6, k2; repeat from * to last 12 sts, k3, p9.

Row 23. K6, C1BK2, k3, *k2, C2FK1, k3, p2, RT, p1, LT, p2, k3, C1BK2, k3; repeat from * to last 11 sts, k2, C2FK1, k6.

Row 24. P8, k3, *k4, p5, k2, p2, k1, p2, k2, p5, k3; repeat from * to last 12 sts, k4, p8.

Row 25. K5, C1BK2, k4, *k3, C2FK1, k2, p2, RT, p1, LT, p2, k2, C1BK2, k4; repeat from * to last 11 sts, k3, C2FK1, k5.

Row 26. P7, k4, *k5, p4, k2, p2, k1, p2, k2, p4, k4; repeat from * to last 12 sts, k5, p7.

Row 27. K3, C4F, k5, *k4, C4B, p2, RT, p1, LT, p2, C4F, k5; rep from * to last 11 sts, k4, C4B, k3.

Row 28. P7, k4, *k5, p4, k2, p2, k1, p2, k2, p4, k4; repeat from * to last 12 sts, k5, p7.

Row 29. K5, C2FK1, k4, *k3, C1BK2, k2, p2, RT, p1, LT, p2, k2, C2FK1, k4; repeat from * to last 11 sts, k3, C1BK2, k5.

Row 30. P8, k3, *k4, p5, k2, p2, k1, p2, k2, p5, k3; repeat from * to last 12 sts, k4, p8.

Row 31. K6, C2FK1, k3, *k2, C1BK2, k3, p2, RT, p1, LT, p2, k3, C2FK1, k3; repeat from * to last 11 sts, k2, C1BK2, k6.

Row 32. P9, k2, *k3, p6, k2, p2, k1, p2, k2, p6, k2; repeat from * to last 12 sts, k3, p9.

Row 33. K7, C2FPK2, k2, *k1, C1BK2P, k4, p2, RT, p1, LT, p2, k4, C2FPK2, k2; repeat from * to last 11 sts, k1, C1BK2P, k7.

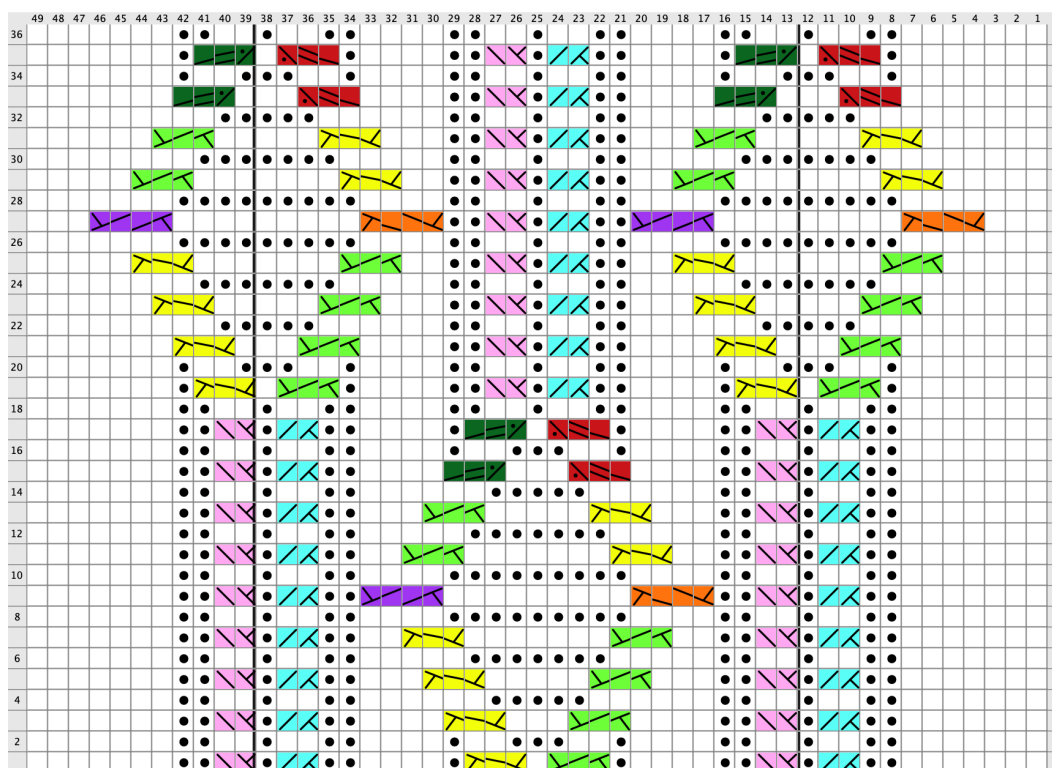
Row 34. P7, k1, p2, k1, *k2, p2, k1, p4, k2, p2, k1, p2, k2, p4, k1, p2, k1; repeat from * to last 12 sts, k2, p2, k1, p7.

Row 35. K7, p1, C2FPK2, k1, *C1BK2P, p1, k4, p2, RT, p1, LT, p2, k4, p1, C2FPK2, k1; repeat from * to last 11 sts, C1BK2P, p1, k7.

Row 36. P7, k2, p2, *k1, p2, k2, p4, k2, p2, k1, p2, k2, p4, k2, p2; repeat from * to last 12 sts, k1, p2, k2, p7.

Work above 36 rows **three times** ending after Row 36.
(3rd skein weighs 26g, Front = 13-13 ½" tall)

Chart B Cable Channel – mult. of 26 + 23, 36 rows



Legend:

<input type="checkbox"/>	knit RS: knit stitch WS: purl stitch
<input checked="" type="checkbox"/>	purl RS: purl stitch WS: knit stitch
	right twist RS: Knit 2 sts together and without taking sts off left needle, reknit the first st and remove both sts from left needle.
	left twist RS: slip as if to knit, slip as if to purl, return both slipped sts to left needle. Knit 2nd st thru the back loop, then knit both sts together thru the back loop
	C1BK2 RS: sl 1 to cn and hold to back, k2, k1 from cn
	C2FK1 RS: sl 2 to cn and hold to front, k1, k2 from cn
	C4F RS: slip 2 to cn and hold in front, k2, k2 from cn
	C4B RS: sl2 to cn and hold in back, k2, k2 from cn
	C2FPK2 RS: sl 2 to cn and hold to front, p1, k2 from cn
	C1BK2P RS: sl 1 to cn and hold to back, k2, p1 from cn