



## Cable Channel – Part Three

Supported with video lessons at [knitpurlhunter.com](http://knitpurlhunter.com)



### Abbreviations

**Buttonhole (5-stitch)** – Sl 1 wyif, (sl 1 wyib, pss0) 4 times, return the last bind off stitch to left hand needle, turn. Using Cable Cast On, cast on 5 stitches, turn. Sl 1 wyib from left hand needle, pass last cast on stitch over this stitch and off the needle. **See *Buttonhole Video***

**C1BK2** – slip next stitch onto cable needle and hold in **back** of work, knit next 2 stitches from left hand needle, then k1 from cable needle.

**C1BK2P** – slip next stitch onto cable needle and hold to **back** of work, k2, p1 from cable needle.

**C2FK1** – slip next 2 stitches onto cable needle and hold to **front** of work, knit next stitch from left hand needle, k2 from cable needle.

**C2FPK2** – slip next 2 stitches onto cable needle and hold to **front** of work, p1, k2 from cable needle.

**C4B** – slip next 2 stitches onto cable needle and hold in **back** of work, knit next 2 stitches from left hand needle, then knit 2 stitches from cable needle. **See *Cables Video***

**C4F** – slip next 2 stitches onto cable needle and hold in **front** of work, knit next 2 stitches from left hand needle, then knit 2 stitches from cable needle. **See *Cables Video***

**cn** – cable needle.

**LT** (Left Twist) - slip as if to knit, slip as if to knit, return both slipped stitches to left needle. Knit second stitch through the back loop, then knit both stitches together through the back loop. **See *Left Twist Updated Video***

**RT** (Right twist) – knit two stitches together and without taking stitches off left hand needle, reknit the first stitch and remove both stitches from left hand needle. **See *Right Twist Video***

## Instructions

### Section C – Buttonhole Band

Place lifeline through last row of Front to aid in later finishing.

Work Twisted Rib as on Button Band until piece measures 7" from conclusion of Front ending after **Row 2**. (I joined 4<sup>th</sup> skein when section measured 5".)

### Twisted Rib - mult. of 13 + 10, 2 rows (See Chart A below)

Row 1. (RS) K7, \*p2, RT, p1, LT, p2, k4; repeat from \* to last 3 sts, k3.

Row 2. (WS) P3, \*p4, k2, p2, k1, p2, k2; repeat from \* to last 7 sts, p7.

**Chart A**  
**Twisted Rib – mult. of 13 + 10**

	23	22	21	20	19	18	17	16	15	14	13	12	11	10	9	8	7	6	5	4	3	2	1	
2								●	●			●			●	●								
								●	●	↘	↙	↗	↖	↗	↖	●	●							1

#### Legend:

**knit**  
RS: knit stitch  
WS: purl stitch

**purl**  
RS: purl stitch  
WS: knit stitch

**right twist**  
RS: knit 2 sts together and without taking sts off left needle, reknit the first st and remove both sts from left needle.

**left twist**  
RS: slip as if to knit, slip as if to knit, return both slipped sts to left needle. Knit 2nd st thru the back loop, then knit both sts together thru the back loop

**Buttonhole Cable – mult. of 26 + 23, 14 rows** (See Chart C p. 4)

Work the following 14 rows **once** ending after Row 14.

Row 1. (RS) K7, p1, C1BK2, k1, C2FK1, p1, k4, \*p2, RT, p1, LT, p2, k4, p1, C1BK2, k1, C2FK1, p1, k4; repeat from \* to last 3 sts, k3.

Row 2. (WS). P3, \*p7, k3, p7, k2, p2, k1, p2, k2; repeat from \* to last 20 sts, p7, k3, p10.

Row 3. K7, C1BK2, k3, C2FK1, k4, \*p2, RT, p1, LT, p2, k4, C1BK2, k3, C2FK1, k4; repeat from \* to last 3 sts, k3.

Row 4. P3, \*p6, k5, p6, k2, p2, k1, p2, k2; repeat from \* to last 20 sts, p6, k5, p9.

Row 5. K6, C1BK2, k5, C2FK1, k3, \*p2, RT, p1, LT, p2, k3, C1BK2, k5, C2FK1, k3; repeat from \* to last 3 sts, k3.

Row 6. P3, \*p5, k7, p5, k2, p2, k1, p2, k2; repeat from \* to last 20 sts, p5, k7, p8.

Row 7. K4, C4F, k1, buttonhole, k1, C4B, k1, \*p2, RT, p1, LT, p2, k1, C4F, k1, buttonhole, k1, C4B, k1; repeat from \* to last 3 sts, k3.

Row 8. P3, \*p5, k7, p5, k2, p2, k1, p2, k2; repeat from \* to last 20 sts, p5, k7, p8.

Row 9. K6, C2FK1, k5, C1BK2, k3, \*p2, RT, p1, LT, p2, k3, C2FK1, k5, C1BK2, k3; repeat from \* to last 3 sts, k3.

Row 10. P3, \*p6, k5, p6, k2, p2, k1, p2, k2; repeat from \* to last 20 sts, p6, k5, p9.

Row 11. K7, C2FK1, k3, C1BK2, k4, \*p2, RT, p1, LT, p2, k4, C2FK1, k3, C1BK2, k4; repeat from \* to last 3 sts, k3.

Row 12. P3, \*p7, k3, p7, k2, p2, k1, p2, k2; repeat from \* to last 20 sts, p7, k3, p10.

Row 13. K7, p1, C2FK1, k1, C1BK2, p1, k4, \*p2, RT, p1, LT, p2, k4, p1, C2FK1, k1, C1BK2, p1, k4; repeat from \* to last 3 sts, k3.

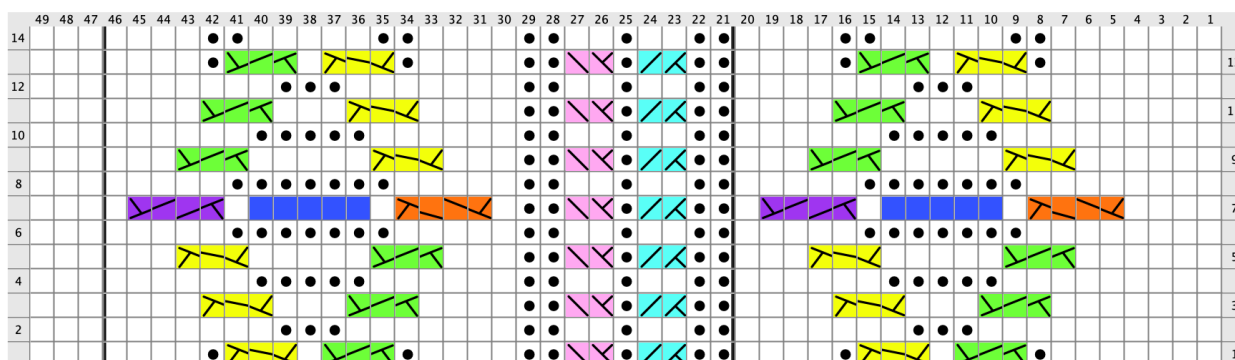
Row 14. P3, \*p4, k2, p5, k2, p4, k2, p2, k1, p2, k2; repeat from \* to last 20 sts, p4, k2, p5, k2, p7.

Bind off stitches in pattern. **See *Bind Off in Pattern* video**

(My 4<sup>th</sup> skein weighed 26g after bind off)

## Chart C

### Buttonhole Cable – mult. of 26 + 23, 14 rows


**Legend:**


**knit**  
RS: knit stitch  
WS: purl stitch



**purl**  
RS: purl stitch  
WS: knit stitch



**C1BK2**  
RS: Sl 1 to cn and hold to back, k2, k1 from cn



**C2FK1**  
RS: sl 2 to cn and hold to front, k1, k2 from cn



**right twist**  
RS: knit 2 sts together and without taking sts off left needle, reknit the first st and remove both sts from left needle.



**left twist**  
RS: slip as if to knit, slip as if to knit, return both slipped sts to left needle. Knit 2nd st thru the back loop, then knit both sts together thru the back loop



**C4F**  
RS: slip 2 to cn and hold in front, k2, k2 from cn



**Buttonhole**  
RS: Sl1 wyif, (sl1 wyib, pssso)4 times, return last bind off st to LHN, turn. Using Cable CO, CO 5 sts, turn. Sl1 wyib from left needle, pssso last CO st over this st and off the needle



**C4B**  
RS: sl2 to cn and hold in back, k2, k2 from cn

Created in KnitVisualizer ([www.knitfoundry.com](http://www.knitfoundry.com))

©2019 Michelle Hunter