



Match Play – Part One

Supported with video lessons at knitpurlhunter.com



Materials

- Sueno by HiKoo, 80% merino superwash, 20% viscose from bamboo, 100 g/ 255 yards each, 8 skeins
- US #6 (4mm) 32" circular needle
- US #6 (4mm) 16" circular needle
- US #7 (4.5mm) 16" circular needle
- Markers, counters (2 separate are helpful), stitch holders (waste yarn works well)
- Optional: Size F crochet hook for cast on

Gauge

Approximately 23 stitches and 33 rows = 4" in stockinette, knit flat on smaller needle

Size

One size

35" wide across front (70" circumference), 23" long from shoulder to hem. (See Schematic p. 5)

Abbreviations

LT (Left Twist) - slip as if to knit, slip as if to knit, return both slipped stitches to left needle. Knit second stitch through the back loop, then knit both stitches together through the back loop.

See *Left Twist (Mirror to Right Twist) Video*

PM – place marker

RS – right side

RT (Right twist) – knit two stitches together and without taking stitches off left hand needle, reknit the first stitch and remove both stitches from left hand needle. **See *Right Twist Video***

sl – slip. **See *Slip Stitch Video***

SM – slip marker

st(s) – stitch(es)

WS – wrong side

wyib – with yarn in back

wyif - with yarn in front

Pattern Notes

- Poncho is knit from the bottom up in two pieces
- Every row begins with a slipped stitch with yarn held to the front. **See *Slipped Stitch Edge Video***

Instructions

Lower Edge - Side One

With #6 32" needle, cast on 208 stitches. I recommend using Crochet Cast On or Long Tail Cast On (No Yarn Tail Calculation).

See *Crochet Cast On* or *Long Tail Cast On (No Yarn Tail Estimate) Video*

Garter Border

Row 1. (WS) Knit.

Row 2. (RS) Sl 1 wyif, knit to end.

Rows 3 – 18. Same as Row 2.

Set Up Rows

Row 1. (WS) Sl 1 wyif, k4, PM, k75, PM, k48, PM, k75, PM, k5.

Row 2. (RS) Sl 1 wyif, k4, slip 1st marker, knit to 2nd marker, SM, sl 1 wyib, knit to 1 st before 3rd marker, sl 1 wyib, SM, knit to 4th marker, SM, k5.

Row 3. (WS) Slip all markers while working across row. Sl 1 wyif, k4, purl across row to last 5 sts, k5.

Body – Side One

- Maintain first and last 5 stitches of every row in established garter edge
- Work Dot Pattern (p. 3) over 75 sts between 1st and 2nd markers
- Work Diamond Pattern (p. 3) over 48 sts between 2nd and 3rd markers
- Work Dot Pattern (p. 3) over 75 sts between 3rd and 4th markers
- Use two separate counters simultaneously to track rows of each pattern

Work Dot and Diamond patterns simultaneously, until Diamond Pattern has been repeated **six times** or 1" less than desired length ending after a Wrong Side row.

Note: If adjusting length, Diamond pattern may be ended after any Wrong Side row.

Dot Pattern – 8 rows, mult. of 4 + 3 (See chart p. 4)

Row 1. (RS) *k3, p1; repeat from * to last 3 sts, k3.

Row 2 and ALL Wrong Side rows through Row 8. Purl.

Row 3. Knit.

Row 5. K1, *p1, k3; repeat from * to last 2 sts, p1, k1.

Row 7. Knit.

Diamond Pattern – 28 rows, 48 sts. (See chart p. 4)

Row 1. (RS) Sl 1 wyib, k2, *k6, LT, k6; repeat from * to last 3 sts, k2, sl 1 wyib.

Row 2 and ALL Wrong Side Rows through Row 28. Purl.

Row 3. Sl 1 wyib, k2, *k5, RT, LT, k5; repeat from * to last 3 sts, k2, sl 1 wyib.

Row 5. Sl 1 wyib, k2, *k4, RT, k2, LT, k4; repeat from * to last 3 sts, k2, sl 1 wyib.

Row 7. Sl 1 wyib, k2, *k3, RT, k4, LT, k3; repeat from * to last 3 sts, k2, sl 1 wyib.

Row 9. Sl 1 wyib, k2, *k2, RT, k6, LT, k2; repeat from * to last 3 sts, k2, sl 1 wyib.

Row 11. Sl 1 wyib, k2, *k1, RT, k8, LT, k1; repeat from * to last 3 sts, k2, sl 1 wyib.

Row 13. Sl 1 wyib, k2, *RT, k10, LT; repeat from * to last 3 sts, k2, sl 1 wyib.

Row 15. Sl 1 wyib, k3, (k12, RT) twice, k15, sl 1 wyib.

Row 17. Sl 1 wyib, k2, *LT, k10, RT; repeat from * to last 3 sts, k2, sl 1 wyib.

Row 19. Sl 1 wyib, k2, *k1, LT, k8, RT, k1; repeat from * to last 3 sts, k2, sl 1 wyib.

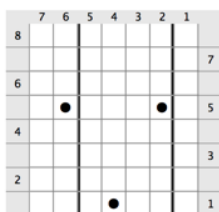
Row 21. Sl 1 wyib, k2, *k2, LT, k6, RT, k2; repeat from * to last 3 sts, k2, sl 1 wyib.

Row 23. Sl 1 wyib, k2, *k3, LT, k4, RT, k3; repeat from * to last 3 sts, k2, sl 1 wyib.

Row 25. Sl 1 wyib, k2, *k4, LT, k2, RT, k4; repeat from * to last 3 sts, k2, sl 1 wyib.

Row 27. Sl 1 wyib, k2, *k5, LT, RT, k5; repeat from * to last 3 sts, k2, sl 1 wyib.

Dot Pattern



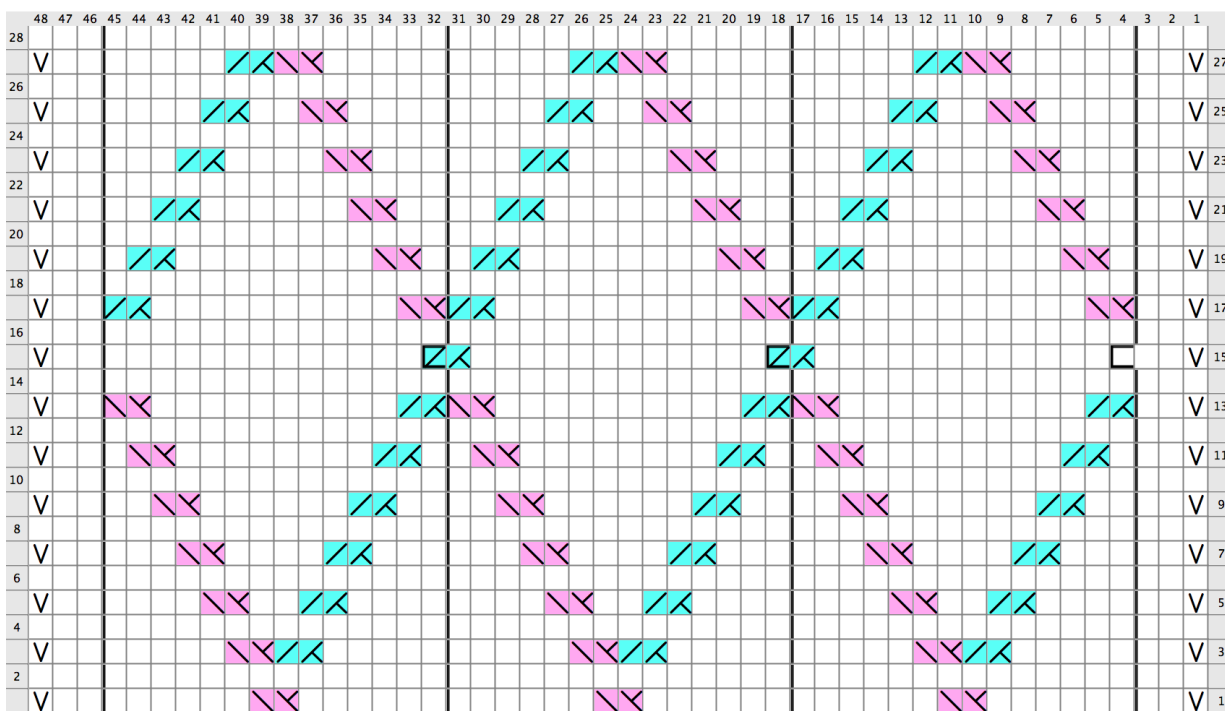
Legend:

knit
 RS: knit stitch
 WS: purl stitch

purl
 RS: purl stitch

Created in KnitVisualizer (www.knitfoundry.com)

Diamond Pattern Chart



Legend:

slip
 RS: Slip stitch as if to purl, holding yarn in back

knit
 RS: knit stitch
 WS: purl stitch

left twist
 RS: slip as if to knit, slip as if to knit, return both slipped sts to left needle. Knit 2nd st thru the back loop, then knit both sts together thru the back loop

right twist
 RS: knit 2 sts together and without taking sts off left needle, reknit the first st and remove both sts from left needle

Created in KnitVisualizer (www.knitfoundry.com)

Schematic
Front / Back

