



Match Play – Part 3

Supported with video lessons at knitpurlhunter.com



Abbreviations

k2tog – knit two together. **See K2tog Video**

LT (Left Twist) - slip as if to knit, slip as if to knit, return both slipped stitches to left needle. Knit second stitch through the back loop, then knit both stitches together through the back loop.

See Left Twist (Mirror Image) Video

PM – place marker

RS – right side

RT (Right twist) – knit two stitches together and without taking stitches off left hand needle, reknit the first stitch and remove both stitches from left hand needle. **See Right Twist Video**

sl – slip. **See Slip Stitch Video**

SM – slip marker

ssk - slip next stitch as if to knit, slip next stitch as if to knit, insert left needle into the front of these two slipped stitches from left to right and knit together. **See SSK Video**

WS – wrong side

wyib – with yarn in back

wyif - with yarn in front

yo – yarn over. **See Yarn Over Video**

yo twice – yarn over twice. **See Double Yarn Over video**

Pattern Notes

- Side One uses Diamond Pattern as the central motif.
- For Side Two, there are 3 options:
 1. **Option #1** - Repeat Side One for an identical front and back.
 2. **Option #2** - Work Dot Pattern over ALL body stitches (no central motif). Side Two will serve as back of poncho.
 3. **Option #3** - Work Chart Lacy Diamond as central motif (see photo p. 1). Side Two will serve as front of poncho.

Instructions - Side Two

Option #1 – Diamond Pattern

Repeat Side One exactly with instructions from Part One.

Option #2- Dot Pattern

Lower Edge

With #6 32" needle, cast on 208 stitches. I recommend using Crochet Cast On or Long Tail Cast On (No Yarn Tail Calculation).

See *Crochet Cast On* or *Long Tail Cast On (No Yarn Tail Calculation)* Video

Garter Border

Row 1. (WS) Knit.

Row 2. (RS) Sl 1 wyif, knit to end.

Rows 3 – 18. Same as Row 2.

Set Up Rows

Row 1. (WS) Sl 1 wyif, k4, PM, knit to last 5 sts, PM, k5.

Row 2. (RS) Sl 1 wyif, k4, slip 1st marker, kfb, knit to 2nd marker, SM, k5. (199 sts between markers)

Row 3. (WS). Slip all markers while working across row. Sl 1 wyif, k4, purl across row to last 5 sts, k5.

Body - Option #2

- Maintain first and last 5 stitches of every row in established garter edge
- Work Dot Pattern (p. 3) over 199 sts between 1st and 2nd markers

Maintaining established garter edges, work Dot Pattern over 199 sts between 1st and 2nd markers until Side Two measures same as Side One ending after a Wrong Side Row.

Note: If six Diamond Pattern repeats were worked on Side One, you will end Side Two after working Row 8 of Dot Pattern or 21 repeats of the eight row Dot Pattern.

Dot Pattern – 8 rows, mult. of 4 + 3

Row 1. (RS) *k3, p1; repeat from * to last 3 sts, k3.

Row 2 and ALL Wrong Side rows through Row 8. Purl.

Row 3. Knit.

Row 5. K1, *p1, k3; repeat from * to last 2 sts, p1, k1.

Row 7. Knit.

Dot Pattern

	7	6	5	4	3	2	1
8							
6							
4		●				●	
2							
1				●			

Legend:

knit
 RS: knit stitch
 WS: purl stitch

purl
 RS: purl stitch

Created in KnitVisualizer (www.knitfoundry.com)

Option #3 – Lacy Diamond Pattern

Lower Edge

With #6 32" needle, cast on 208 stitches. I recommend using Crochet Cast On or Long Tail Cast On (No Yarn Tail Calculation).

See *Crochet Cast On* or *Long Tail Cast On (No Yarn Tail Calculation)* Video

Garter Border

Row 1. (WS) Knit.

Row 2. (RS) Sl 1 wyif, knit to end.

Rows 3 – 18. Same as Row 2.

Set Up Rows

Row 1. (WS) Sl 1 wyif, k4, PM, k75, PM, k48, PM, k75, PM, k5.

Row 2. (RS) Sl 1 wyif, k4, slip 1st marker, knit to 2nd marker, SM, sl 1 wyib, knit to 1 st before 3rd marker, sl 1 wyib, SM, knit to 4th marker, SM, k5.

Row 3. (WS) Slip all markers while working across row. Sl 1 wyif, k4, purl across row to last 5 sts, k5.

Body – Option #3

- Maintain first and last 5 stitches of every row in established garter edge
- Work Dot Pattern (p. 3) over 75 sts between 1st and 2nd markers
- Work Lacy Diamond Pattern (p. 8-9) over 48 sts between 2nd and 3rd markers
- Work Dot Pattern (p.3) over 75 sts between 3rd and 4th markers
- Use two separate counters simultaneously to track rows of each pattern

Work Dot and Lacy Diamond patterns simultaneously, until Lacy Diamond Pattern has been repeated **six times** or 1" less than desired length ending after a Wrong Side row.

Lacy Diamond Pattern – 28 rows, 48 sts

Row 1. (RS) Sl 1 wyib, k2, *k6, LT, k6; repeat from * to last 3 sts, k2, sl 1 wyib.

Row 2 and ALL Wrong Side Rows through Row 28. Purl. In Rows 14 and 18, purl across working double yarn overs as p1, k1.

Row 3. Sl 1 wyib, k2, *k5, RT, LT, k5; repeat from * to last 3 sts, k2, sl 1 wyib.

Row 5. Sl 1 wyib, k2, *k4, RT, k2, LT, k4; repeat from * to last 3 sts, k2, sl 1 wyib.

Row 7. Sl 1 wyib, k2, *k3, RT, k4, LT, k3; repeat from * to last 3 sts, k2, sl 1 wyib.

Row 9. Sl 1 wyib, k2, *k2, RT, k6, LT, k2; repeat from * to last 3 sts, k2, sl 1 wyib.

Row 11. Sl 1 wyib, k2, *k1, RT, k2, yo, ssk, k2tog, yo, k2, LT, k1; repeat from * to last 3 sts, k2, sl 1 wyib.

Row 13. Sl 1 wyib, k2, *RT, k1, k2tog, yo, k2tog, yo twice, ssk, yo, ssk, k1, LT; repeat from * to last 3 sts, k2, sl 1 wyib.

Row 15. Sl 1 wyib, k3, *k2, (yo, ssk) twice, (k2tog, yo) twice, k2, RT; repeat from * ending last repeat k5, sl 1 wyib instead of k2, RT.

Row 17. Sl 1 wyib, k2, *LT, k1, k2tog, yo, k2tog, yo twice, ssk, yo, ssk, k1, RT; repeat from * to last 3 sts, k2, sl 1 wyib.

Row 19. Sl 1 wyib, k2, *k1, LT, k2, yo, ssk, k2tog, yo, k2, RT, k1; repeat from * to last 3 sts, k2, sl 1 wyib.

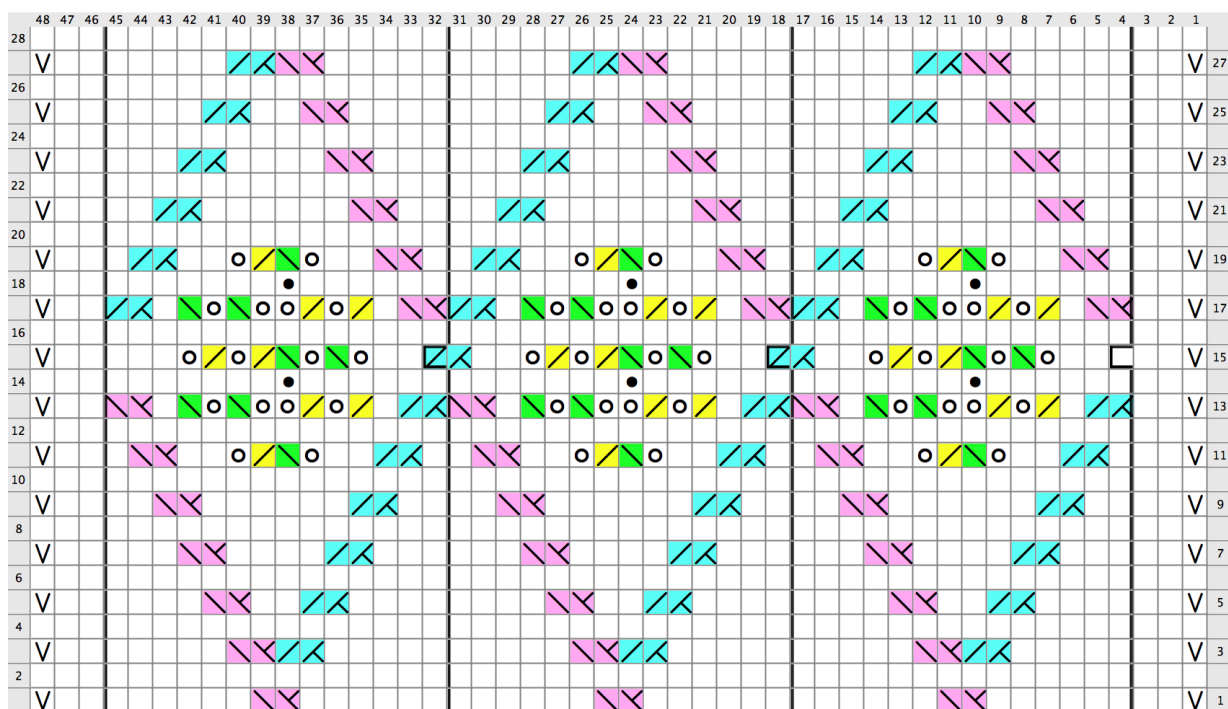
Row 21. Sl 1 wyib, k2, *k2, LT, k6, RT, k2; repeat from * to last 3 sts, k2, sl 1 wyib.

Row 23. Sl 1 wyib, k2, *k3, LT, k4, RT, k3; repeat from * to last 3 sts, k2, sl 1 wyib.

Row 25. Sl 1 wyib, k2, *k4, LT, k2, RT, k4; repeat from * to last 3 sts, k2, sl 1 wyib.


Row 27. Sl 1 wyib, k2, *k5, LT, RT, k5; repeat from * to last 3 sts, k2, sl 1 wyib.


Lacy Diamond





Created in KnitVisualizer (www.knitfoundry.com)


Legend:


- 
slip
 RS: Slip stitch as if to purl, holding yarn in back

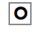
- 
knit
 RS: knit stitch
 WS: purl stitch


- 
purl
 RS: purl stitch
 WS: knit stitch

- 
left twist
 RS: slip as if to knit, slip as if to knit, return both slipped sts to left needle. Knit 2nd st thru the back loop, then knit both sts together thru the back loop
 WS:

- 
right twist
 RS: knit 2 sts together and without taking sts off left needle, reknit the first st and remove both sts from left needle.

- 
yo
 RS: Yarn Over

- 
ssk
 RS: slip next st as if to knit, slip next st as if to knit, insert left needle into the front of these two slipped sts from left to right and knit together

- 
k2tog
 RS: knit 2 sts together

Created in KnitVisualizer (www.knitfoundry.com)