



Audition – Part 1

Supported with video lessons at knitpurlhunter.com



Materials

- MC (Option 1): Simplicity Spray; 55% Merino Superwash, 28% Acrylic, 17% Nylon; 456 yards per 200 gram cake, **1 cake**. ---OR--- MC (Option 2): Simplicity Tonal, 55% Merino Superwash, 28% Acrylic, 17% Nylon; 117 yards per 50 gram hank, **4 hanks** of the same color.
- Contrasting Color (CC) - **simplicity** by HiKoo, 55% merino superwash, 28% acrylic, 17% nylon, 50 g/117 yds, 2 skeins
- US #7 (4.5mm) **addi** 24-32" circular needle

Gauge

Approximately 20 stitches and 41 rows = 4" in garter stitch, unblocked

Size

Asymmetrical triangle, approximately 16" deep and 67" at longest edge

Abbreviations

B (Butterfly) – insert right hand needle under the slipped strand from bottom upward, knit next stitch pulling the loop under the strand and catching it as the knit stitch is completed.

See **Little Gulls Video**

CC – contrasting color.

k2tog – knit two together. See **K2tog Video**

kfb – knit into front and back of stitch. See **Kfb Video**

MC – main color.

sl – slip. See **Slip Stitch Video**

wyif - with yarn in front.

Instructions

Section #1 (All MC)

Using MC, cast on 5 sts.

Row 1. (RS) K1, kfb, knit to last 3 sts, k2tog, k1.

Row 2. (WS) Knit to last 2 sts, kfb, k1. (1 st increased)

Repeat Rows 1 and 2 until there are 56 stitches ending after Row 2.

Approx. 165g remaining in MC.

Section #2 (MC and CC)

Row 1. (RS) With **CC**, k1, kfb, knit to last 3 sts, k2tog, k1.

Row 2. (WS) With **CC**, knit to last 2 sts, kfb, k1. 57 sts

Row 3. With **MC**, same as 1.

Row 4. With **MC**, same as 2. 58 sts

Row 5. With **CC**, same as 1.

Row 6. With **CC**, same as 2. 59 sts

Row 7. With **CC**, same as 1.

Row 8. With **CC**, same as 2. 60 sts

Row 9. With **MC**, same as 1.

Row 10. With **MC**, same as 2. 61 sts

Row 11. With **CC**, same as 1.

Row 12. With **CC**, same as 2. 62 sts

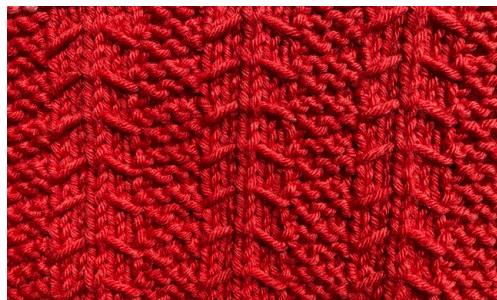
Row 13. With **MC**, same as 1.

Row 14. With **MC**, same as 2. 63 sts

Cut MC yarn.

Approx. 163g remaining in MC and 45g of CC

Section #3 (All CC)



Set Up

Set Up Row 1. (RS) K1, kfb, knit to last 3 sts, k2tog, k1.

Set Up Row 2. (WS) K2, p2, *k3, p5; repeat from * to last 3 sts, k1, kfb, k1. 64 sts

Little Gulls (See Chart p. 4)

Row 1. (RS) K1, kfb, k2, *sl 5 wyif, k3; repeat from * to last 4 sts, k1, k2tog, k1.

Row 2. (WS) K2, p1, * k3, p5; repeat from * to last 5 sts, k3, kfb, k1. 65 sts

Row 3. K1, kfb, k4, *k2, Butterfly, k5; repeat from * to last 3 sts, k2tog, k1.

Row 4. K2, *k3, p5; repeat from * to last 7 sts, k3, p2, kfb, k1. 66 sts

Row 5. K1, kfb, k6, *sl 5 wyif, k3; repeat from * to last 10 sts, sl 5 wyif, k2, k2tog, k1.

Row 6. K1, *k3, p5: repeat from * to last 9 sts, k3, p4, kfb, k1. 67 sts

Row 7. K1, kfb, k8, *k2, Butterfly, k5; repeat from * to last 9 sts, k2, Butterfly, k3, k2tog, k1.

Row 8. *K3, p5; repeat from * to last 3 sts, k1, kfb, k1. 68 sts

Row 9. K1, kfb, k2, *sl 5 wyif, k3; repeat from * to last 8 sts, sl 5 wyif, k2tog, k1.

Row 10. K2, p5, *k3, p5; repeat from * to last 5 sts, k3, kfb, k1. 69 sts

Row 11. K1, kfb, k4, *k2, Butterfly, k5; repeat from * to last 7 sts, k2, Butterfly, k1, k2tog, k1.

Row 12. K2, p4, *k3, p5; repeat from * to last 7 sts, k3, p2, kfb, k1. 70 sts

Row 13. K1, kfb, k6, *sl 5 wyif, k3; repeat from * to last 6 sts, k3, k2tog, k1.

Row 14. K2, p3, *k3, p5; repeat from * to last 9 sts, k3, p4, kfb, k1. 71 sts

Row 15. K1, kfb, k8, *k2, Butterfly, k5; repeat from * to last 5 sts, k2, k2tog, k1.

Row 16. K2, p2, *k3, p5; repeat from * to last 3 sts, k1, kfb, k1. 72 sts

Row 17. Same as 1.

Row 18. Same as 2. 73 sts

Row 19. Same as 3.

Row 20. Same as 4. 74 sts

Row 21. Same as 5.

Row 22. Same as 6. 75 sts

Row 23. Same as 7.

Row 24. Same as 8. 76 sts

Row 25. Same as 9.

Row 26. Same as 10. 77 sts

Row 27. Same as 11.

Row 28. Same as 12. 78 sts

Row 29. Same as 13.

Row 30. Same as 14. 79 sts

Row 31. Same as 15.

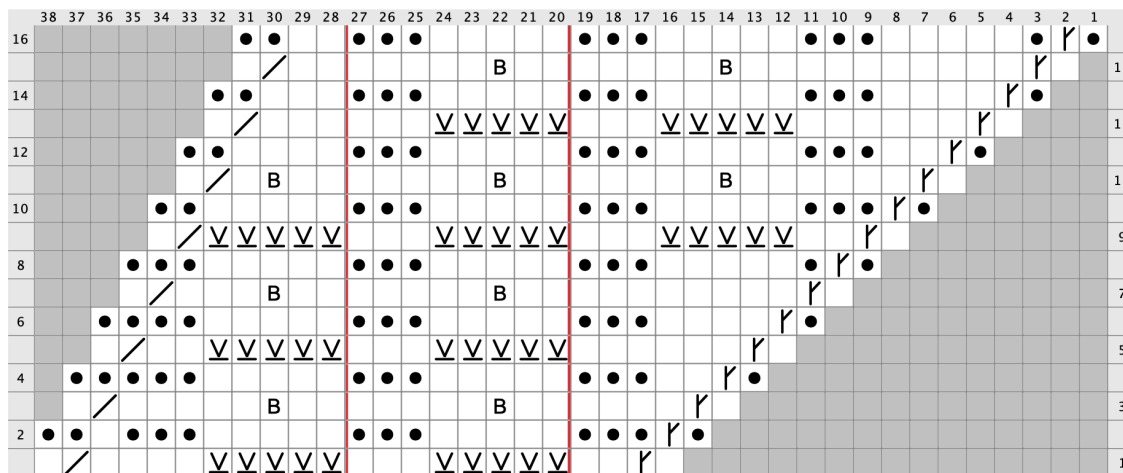
Row 32. Same as 16. 80 sts

First skein of CC = 23g

Do NOT cut CC as it will be used in next week's Section #4.

Section #3 - Little Gulls (CC)

8-stitch repeat between red lines, work Rows 1-16 twice
(Don't forget to work Set Up rows prior to starting chart)



Legend:

No Stitch
RS: Placeholder - No stitch made.

knit
RS: knit stitch
WS: purl stitch

kfb
RS: Knit into the front and back of the stitch
WS: Knit into the front and the back of the stitch

slip wyif
RS: Slip stitch as if to purl, with yarn in front

k2tog
RS: Knit two stitches together as one stitch

knit
WS: knit

B (Butterfly)
RS: Insert right hand needle under the slipped strand from bottom upward, knit next stitch pulling the loop under the strand and catching it as the knit stitch is completed.

Created in KnitVisualizer (www.knitfoundry.com)

©Michelle Hunter 2019